



# CERTIFICATE OF QUALITY

## EverSure™ Type GP Cement

NZS3122:2009 (Bulk Despatch)



Issued to: National Sales Manager

Test Report No: 21#78

info@goldenbay.co.nz

Code	Week Ending / Voyage	Specific Surface Area	Normal Consistency	Initial Set	Final Set	Soundness	Compressive Strength							Free Lime	Sodium Equivalent (NaEq)	Sulphur Trioxide (SO3)
							ISOCEN			Concrete						
							3 days	7 days	28 days	Slump	3 days	7 days	28 days			
Mean		338	29.0	134	3:26	1	32.2	45.5	66.2	87	27.2	35.7	46.6	1.7	0.55	2.2
Standard Deviation		13	0.1	11	0:10	0	0.8	1.3	1.3	4	1.8	1.4	1.4	0.2	0.01	0.03
Min		315	28.8	120	3:00	0	30.6	42.9	63.6	80	24.6	33.6	44.5	1.4	0.53	2.1
Max		360	29.2	150	3:45	2	33.9	48.2	68.1	95	31.2	38.5	49.2	2.0	0.57	2.3
NZS 3122:2009 Requirements				45 min	6:00 max	5 max		35.0 min	45.0 min						0.6 max	3.5 max
Units		m2/kg	%	minutes	hrs:mins	mm	MPa	MPa	MPa	mm	MPa	MPa	MPa	%	%	%
210416-333-GP	16/04/21	345	29.2	120	3:15	0	30.6			90	27.1			1.9	* 0.53	* 2.4
210413-335-GP	13/04/21	345	29.0	120	3:15	1	32.0							1.8	* 0.52	* 2.4
210409-977-GP	09/04/21	345	29.1	135	3:15	1	32.1	44.5						1.9	* 0.51	* 2.3
210406-970-GP	06/04/21	355	28.9	135	3:15	2	32.5	45.1		85	25.5	35.2		1.6	* 0.50	* 2.4
210403-622-GP	03/04/21	335	28.9	135	3:15	1	32.3	45.4		90	24.6	35.1		2.0	0.56	2.2
210330-620-GP	30/03/21	350	28.8	120	3:00	1	32.4	45.0						2.0	0.55	2.2
210327-181-GP	27/03/21	345	28.9	135	3:30	1	31.1	42.9						1.9	0.54	2.2
210322-178-GP	22/03/21	340	28.8	120	3:15	1	31.4	44.1		90	26.0	35.3		1.7	0.55	2.2
210319-803-GP	19/03/21	335	28.9	120	3:30	1	31.4	45.0	66.1	85	27.9	37.2	47.1	1.5	0.53	2.3
210315-805-GP	15/03/21	330	28.8	135	3:30	1	31.5	44.8	67.2					1.6	0.55	2.2
210311-450-GP	11/03/21	350	28.9	135	3:45	2	32.2	43.6	66.5					1.8	0.53	2.2
210308-446-GP	08/03/21	355	28.9	135	3:30	2	33.3	45.5	66.0	85	27.0	35.1	45.9	1.7	0.55	2.2
210305-149-GP	05/03/21	360	29.0	135	3:15	1	31.3	45.9	63.6	85	25.2	33.6	46.3	1.8	0.55	2.2
210303-146-GP	03/03/21	355	29.0	150	3:30	1	32.8	45.4	64.6					1.9	0.53	2.2
210228-737-GP	28/02/21	335	29.0	150	3:45	0	32.1	46.4	65.2	80	31.2	38.5	45.5	1.7	0.54	2.2
210225-717-GP	25/02/21	335	29.0	135	3:30	2	33.6	48.2	68.0					1.9	0.56	2.3
210219-349-GP	19/02/21	330	29.0	135	3:30	0	32.3	45.5	67.0					2.0	0.53	2.2
210216-345-GP	16/02/21	320	29.0	135	3:30	0	31.8	46.6	65.1	80	28.0	35.5	48.0	1.8	0.53	2.2
210211-940-GP	11/02/21	330	29.0	135	3:30	2	33.9	45.4	67.5	95	27.8	37.6	49.2	1.4	0.55	2.3
210205-824-GP	05/02/21	335	28.9	120	3:30	1	32.8	48.2	68.1					1.4	0.56	2.2
210202-663-GP	02/02/21	320	28.9	120	3:30	1	33.1	46.1	67.2	85	29.7	35.5	46.8	1.7	0.56	2.3
210130-471-GP	30/01/21	340	29.0	150	3:30	2	32.8	45.5	66.8	90	26.0	35.9	44.5	1.7	0.56	2.2
210128-468-GP	28/01/21	315	28.9	150	3:45	1	32.3	46.0	66.7					1.7	0.57	2.1
210121-280-GP	21/01/21	325	29.1	135	3:30	1	31.7	44.4	65.7	85	27.6	33.8	46.3	1.7	0.56	2.2
210117-186-GP	17/01/21	320	29.1	150	3:30	0	31.8	46.7	64.3					1.7	0.54	2.2

The above samples were tested as received in accordance with the current terms of accreditation and methods stated in NZS 3122:2009 with the exception of:

Chemical composition to ASTM C114-18

- Concrete Compressive Strength test results outside the scope of accreditation

Sample retested

# No result available at time of certificate issue

\* Tested by SpectraChem Analytical - Verum Group

This Report must not be reproduced except in full

Raki Harding  
Technical Manager

Date issued: 23/04/2021



Portland Works, Portland, Whangarei 0178

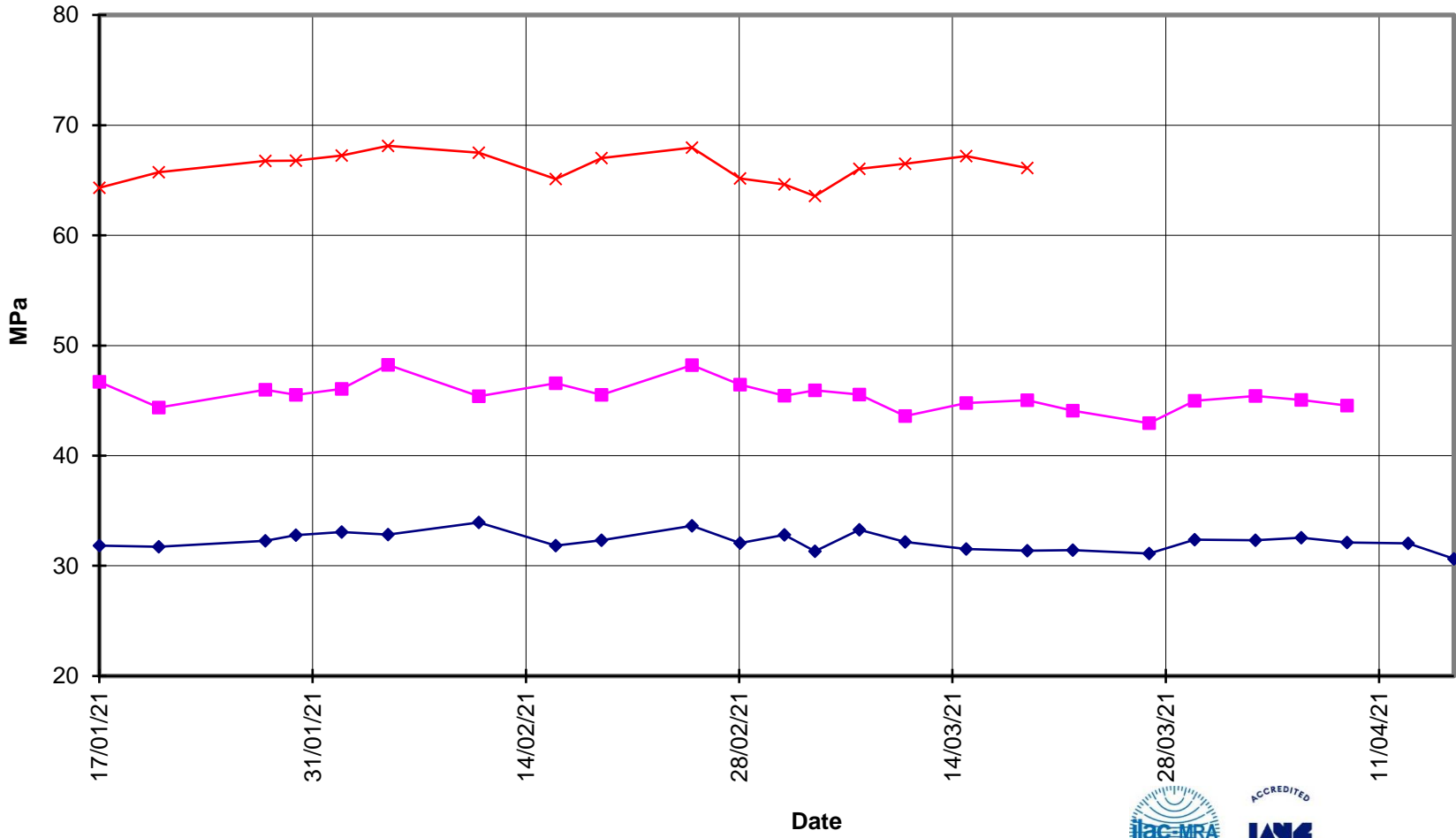


**EverSure™  
Type GP Cement**



**Compressive Strength ISO-CEN Mortar  
(Bulk Despatch)**

—x— 28 Days    —■— 7 Days    —◆— 3 Days





**EverSure™  
Type GP Cement**



**Compressive Strength Concrete  
(Bulk Despatch)**

—x— 28 Days    —■— 7 Days    —◆— 3 Days    —■— Slump

